

#### Type 4:

## Installation instructions, Flexrail, round outlet equipped with Fasttrack

### Installation instructions

Inspect your shipment carefully matching contents with packing slip information. Make sure everything is present. Note any missing or damaged pieces listed on the Bill of Lading before accepting the shipment in order to facilitate a claim for shipping damage.

Euro Air products are for use only as described in the brochure and catalogue published by Euro Air. All other use is without liability for Euro Air A/S. If you have any questions about Euro Air products please contact your local Euro Air office.

### Special tips:

1. All outlet components are given a position number which can be found on the washing label (washing label is sewn onto the inside of the outlet, one present at all joints). **When mounting, always connect continuous numbers, example: Pos. 1.1 => Pos. 1.2 => Pos. 1.2 => Pos. 1.3 (by identical pieces, the components are given the same position number).**
2. To hide the clamp you can wrap the collar piece over the clamp
3. When the unit is turned on, gently pull the sock on one end to straighten out any wrinkles, and fix the clip at the end of the outlet to the suspension wire, using the included wire locknut.

#### Type 4:

## Montage vejledning, Flexrail, rund posekanal med Fasttrack

### Montage vejledning

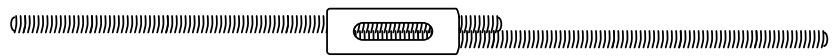
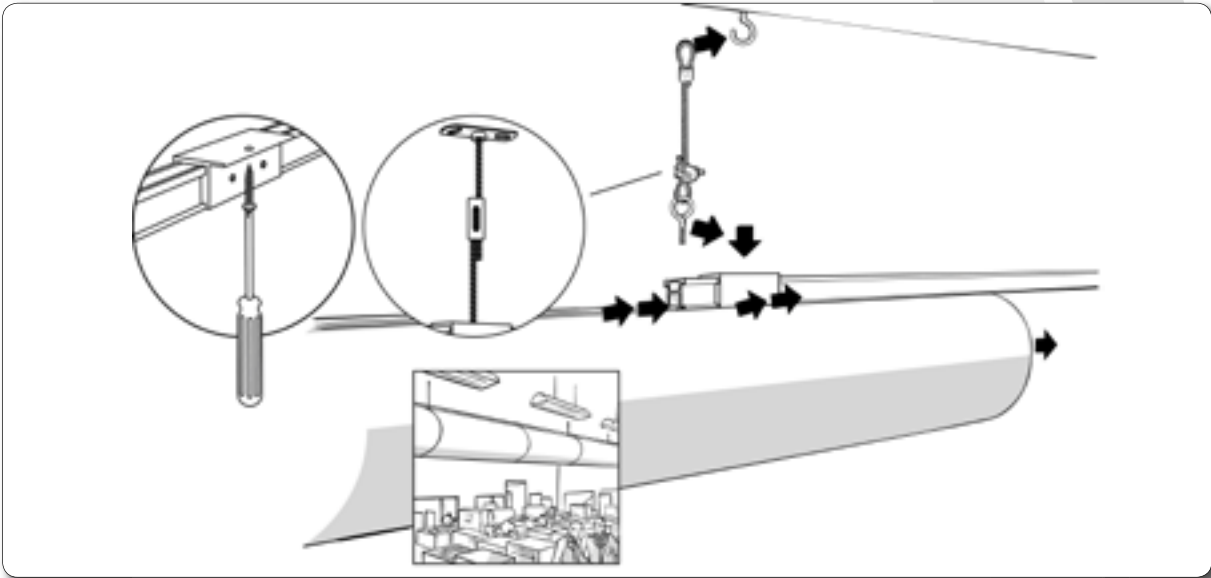
Inspicer forsendelse omhyggeligt, indhold i kasser skal svare nøjagtigt til vedlagt pakkeliste. Såfremt enkelte dele er blevet beskadiget under transporten, skal dette noteres på fragtbrev før forsendelse accepteres.

Anvendelse af Euro Air's produkter, begrænser sig til de i brochure og katalog nævnte områder. Al anden anvendelse sker på eget ansvar og absolut uden ansvar for Euro Air.

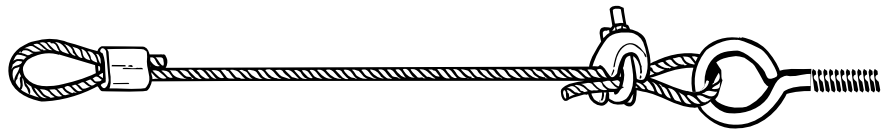
Ved tvivlsspørgsmål, henvend Dem da altid til Euro Air's hovedkontor i Rødning.

### Specielle tips:

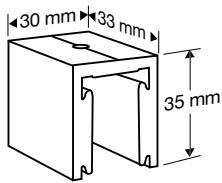
1. Alle delkomponenter til posen er tildelt et individuelt positionsnummer. Dette nummer kan findes på indvendig side af posen, på det isyede vaskemærke. **Ved montage monteres altid efter fortløbende numre, eksempel: Pos. 1.1 => Pos. 1.2 => Pos. 1.2 => Pos. 1.3 (såfremt flere delkomponenter er identiske har disse identiske positionsnumre).**
2. Buk posekanal rundt om spændebånd så dette skjules
3. Efter opstart træk da forsigtigt i ende af posekanal så eventuelle rynker udglattes, og fiksér sidste clips på montage wiren vha. medleverede wirelås.



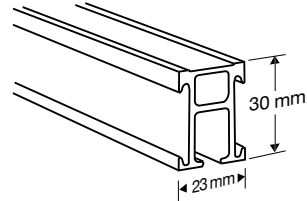
**Threaded beam with connector**  
 Gevindstang m. samler



**Strap-up for flexrail**  
 Strap-up til flexrail



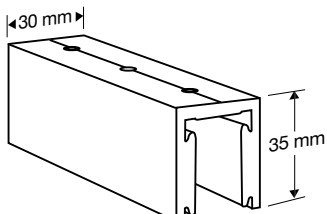
**Flexrail supporting unit**  
 Flexrail ophæng



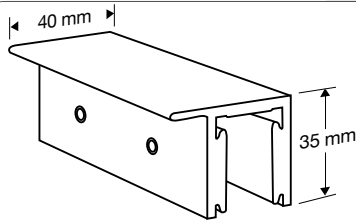
**Flexrail**  
 Flexrail



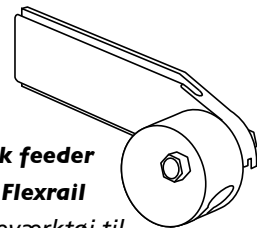
**Ceiling bracket for threaded beam**  
 Loftsbeslag til gevindstang



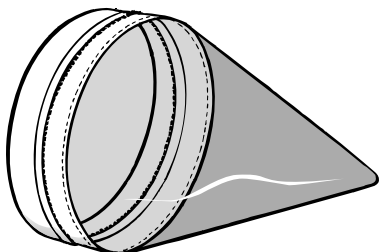
**Flexrail connector**  
 Flexrail samler



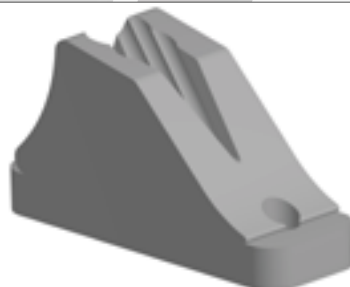
**Ceiling connector for flexrail**  
 Loftsbeslag for flexrail



**Fasttrack feeder tool for Flexrail**  
 Montageværktøj til Fasttrack/Flexrail



**Static Regain diffuser**  
 SRD



**Mini cleat**  
 Skødeklemme

## 1. Installing round outlets with Fasttrack on Flexrail

Our Flexrail suspension system is very versatile. We normally use this rail together with one of the three standard options mentioned below:

1. Strap-up's (steel wire with loop one end, M6 Eye bolt other end). Strap-up's are intended for hanging the rail into the room, by screwing a hook to the ceiling (hooks not supplied by Euro Air). Our standard Flexrail connector is used in conjunction with the strap-up's, this connector has a hole tapped M6 on the upper side.
2. Threaded beam (M6 threaded beam with matching threaded beam connector and M6 ceiling bracket). This item is also intended for dropping rail into room, but gives a more rigid result than by the strap-up's. Again the standard Flexrail connector is used, with the M6 tapped hole.
3. Flexrail ceiling bracket. This item acts as a rail connector, as well as an anchor point. This connector has a small wing for fixing directly onto ceiling.

- For all of the above an anchor point must be established for every 2 meters. In these anchor points a strap-up/Threaded beam/ceiling connector is fitted, depending on which type is better suited for the particular application.
- Flexrail is fitted to connectors at anchor points
- \*The Fasttrack sewn into the outlet is fed into the Flexrail opening, after which the outlet can be pushed/pulled onto the rail.
- The outlet is fixed to the steel duct/fan using a clamp.

If "Luxe type bottom" has been ordered, 1 piece "mini cleat" will also follow per outlet. The cleat is mounted directly onto the rail at the end where the bottom will be located (cleat fitted using the included flat nuts and screws). When "Luxe type bottom" is ordered, the outlet itself is fitted with a pull cord, located near the bottom of the outlet. This cord is to be pulled tight after fitting the outlet to the rail, after which it can be locked into the cleat. Finish by shortening the cord as needed.

\* If you have ordered our special "Fasttrack feeder for Flexrail", this is inserted into the side groove of the Flexrail, before feeding the Fasttrack into the rail. The outlet can now be pulled onto the rail with an absolute minimum of effort.

## 1. Montage af rund posekanal med Fasttrack på Flexrail

Vort Flexrail skinneresystem er særdeles fleksibelt. Vi anvender normalt skinnen sammen med én af nedenstående tre standard løsninger:

1. Strap-up (stålwire med løkke i den ene ende, M6 øjebolt i den anden ende). Disse beregnet for nedhængning af skinne, der skrues krog i loftet (Krogene er ikke en Euro Air leverance). Vor standard samler medleveres, denne har M6 gevindhul på oversiden.
2. Gevindstang (M6 gevindstang med tilhørende samler samt loftbeslag). Ligeledes for nedhængning af skinne, men en mere stiv løsning. Gevindstangen leveres i 2 meter længder. Vor standard samler medleveres, denne har M6 gevindhul på oversiden.
3. Flexrail loftsbeslag. Denne fungerer både som samler mellem to skinner, samt har flig for fastgørelse til loftet.

- For alle ovenstående gælder at der for hver 2 meter skal der oprettes et understøtningspunkt. I hvert understøtningspunkt monteres Strap-up/Gevindstang/Flexrail loftsbeslag alt efter hvilken type der passer bedst til opgaven.
- Skinnen fastgøres i understøtningen og samles med skinneresamlere.
- Den i posen isyede Fasttrack indføres i skinnen, hvorefter posen trækkes på skinnen\*.
- Posekanalen fastgøres på stålskanal/ventilator ved hjælp af spændebånd.

Såfremt der er bestilt "Luxe bund" medfølger ligeledes et stk. "Mini cleat" (skødeklamme) per posekanal. Denne monteres direkte på skinnen, i den ende hvor posekanalens bund sidder. Når der bestilles "Luxe bund" er posen udstyret med en kraftig isyet snor ved bunden. Denne snor bruges til at strække posen helt ud, hvorefter den kiles fast i skødeklammen. Slutteligt afkortes snoren efter behov.

\*Såfremt der er bestilt vort specielle montageværktøj for Flexrail, skydes denne først ind i siden af Flexrail skinnen, hvor monteringen lettes væsentligt.

GB

#### Washing instructions

Cleaning of polyester and Trevira CS

Wash 2-4 times at max 40°C with washing powder in accordance to instructions by manufacturer.

If outlets are heavily soiled, they should be rinsed between washes. If the outlets are to be disinfected, add up to 200 grams of active chlorine to the final rinse water (N.B. colored socks can lose some of their color when disinfected)

Rinse outlets in clean cold water.

Socks can be spin dried, the exception being outlets with internal rings. Here the rings must be removed prior to drying.

#### Chemical cleaning of polyester and Trevira CS

Chemical cleaning of outlets should only be attempted in cases where the outlets are slightly dirty. To achieve some degree of disinfection, it is recommended to use chemical cleaning with perchlorethylen.

#### Washing or chemical cleaning, clean room materials

Washing or chemical cleaning of clean room materials is not recommended under normal circumstances, but is possible following the procedures given for Polyester and Trevira CS material. If the fabric turns slightly grey during operation, the pre-filtration should be examined and possibly exchanged for a filter better suited. During the washing procedure, particles can be picked up by the fabric and later blown into the room. If the clean room socks are being washed there is no further guarantee for the function of the socks from EURO AIR, with regards to particle count.

#### Cleaning of Inject outlets

EURO AIR Inject outlets do not require cleaning from a flow technical point of view, however aesthetic or hygiene conditions may necessitate the cleaning of the outlets. EURO AIR Inject systems can be cleaned manually on the outside and on the inside. For this purpose a thin water/soap dilution and a brush or a sponge should be used (standard grade washing detergent can be used). After the cleaning the Inject Socks should be rinsed with clean water. If the Inject Sock is very dirty the inside of the sock should be turned out and swept or vacuumed. Use of Hydrocarbon based solvents can cause damage. Under no circumstances use solvents containing Chlorate, this will deteriorate the PVC coating, causing the material to turn brittle, eventually cracking can occur.

#### Cleaning of M0 Outlets (Glass fibre weave)

These outlets must only be cleaned by means of a damp cloth. A standard commercial grade detergent can be used in a watery solution for this purpose. Outlets must be allowed to drip dry.

DK

#### Vaskeanvisning

Vask af polyester og Trevira CS

Vask 2-4 gange ved max. 40°C, tilsæt vaskepulver i dosering svarende til fabrikantens anvisning. Såfremt posekanalerne er meget snavsede bør disse skylles mellem hver vask. Efter endt vask efterskylles i rent koldt vand. Såfremt poserne ønskes desinficeret kan dette opnås ved at tilsætte max. 200g aktivt klor til sidste hold skyllevand (vær opmærksom på at farvede kanaler ved denne desinficering kan blive let blegede). Såfremt der desinficeres efterskylles igen med rent koldt vand. Kanaler med interne ringe kan centrifugeres, blot skal ringene demonteres før dette kan foretages.

#### Kemisk rens af polyester og Trevira CS

Kemisk rens af tekstil kanaler bør kun anvendes i tilfælde hvor disse har en lav- til middel tilsmudsgrad. Ved kemisk rens bør der anvendes perkloræthylen, og kanalerne bør udluftes.

#### Vask eller kemisk rens af renrumsmaterialer

Vask eller kemisk rens af renrumsmaterialer anbefales ikke under normale omstændigheder, men er dog muligt som nævnt ovenfor for polyester og Trevira CS materiale. Hvis kanalen har en tendens til at blive grålig i farven bør forfiltret efterses, og eventuelt udskiftes med filter af højere filterklasse. Under rense- eller vaskeprocessen kan pose materialet blive forurenet med støvpartikler og lignede, hvorfor Euro Air A/S fralægger sig ansvaret for renrumsklassen efter en eventuel vask.

#### Rengøring af injekt materiale

Kan ikke maskinvaskes. Euro Air injekt kanaler kræver ikke vask eller rens ud fra et luftteknisk synspunkt, idet dette materiale er ikke-permeabelt, det vil sige, materialet stopper ikke til selv om der støvpartikler tilstede i indblæsningsluften. Poserne kan rengøres manuelt på yder- og inderside med en tynd sæbeopløsning vha. svamp og børste. Efter rengøring vaskes poserne over med rent vand. Der må under ingen omstændigheder bruges klorholdige rengøringsprodukter, idet klor kan nedbryde PVC-belægningen.

#### Rengøring af glasfibervæv

Kan ikke maskinvaskes. Kan rengøres med fnugfri klud påført tynd opløsning af sæbevand. Skylles efterfølgende med rent vand og dryp tørrer.



MI500004