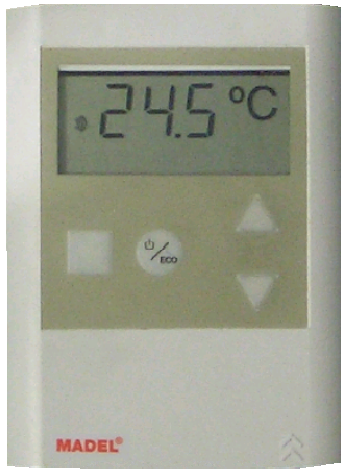


MADEL®

we shape the air



VIA RADIO

K F C [EN]

Zoning System R/C allows for individualised temperature control of different zones using the same air treatment equipment to provide **increased comfort** in each one.

KFC control panel is compatible with any duct-type **hidronic** air conditioning system.

The control is carried out by means of digital thermostats linked by radio frequency to a control panel who operates the different motorised (24 Vdc) zone dampers.

R/C Radio-controlled digital thermostats offer an **easy installation**: Neither thermostat wiring nor additional works are required.

Ecologically friendly: Zoning System R/C provides a rational use of energy, both from an economic and environmental point of view.

KFC Zoning System is designed to work with **HIDRONIC** duct-type installations. Allows to control up to 6 different zones temperatures with only 1 inner unit.

- Individual installations. See drawing 1.
- Multiple installations. See drawing 2.

Applications

Control of installations, multiple or individual, type water with the following shape:

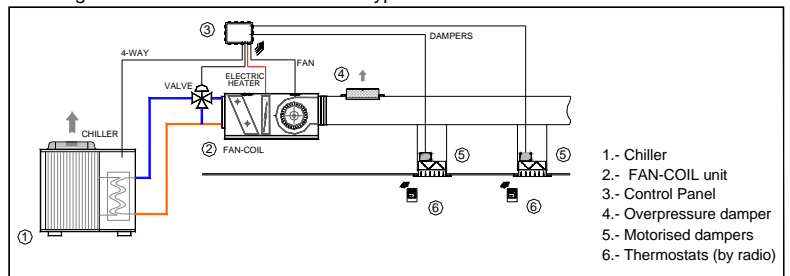
- 2 pipes installations.
- 2 pipes plus electric heater installations.
- 4 pipes installations.

Technical characteristics

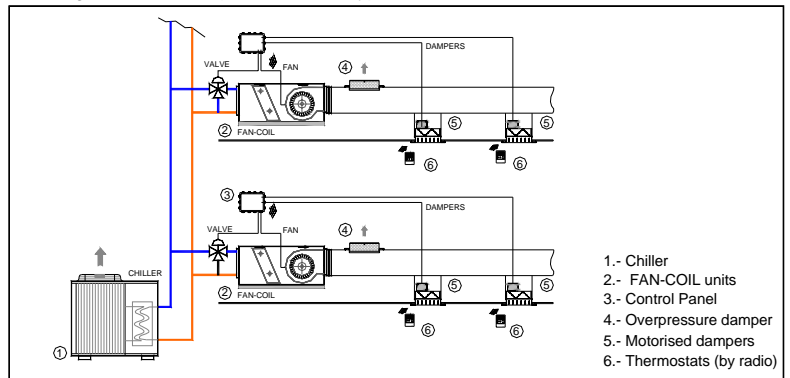
Control panel (receiver)

- Power 230 VAC ± 10%, 50/60 Hz
- Consumption: 10 VA.
- Outputs:
 - 9 free tension relays 230 VAC x 10 A.
 - 6 outputs 24 VDC, for zones control.
- Outside fixing of the control box by means of screws.
- Protection level: IP 54

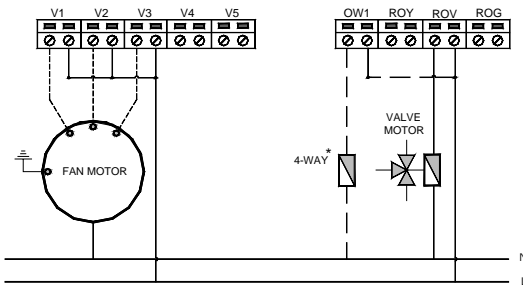
Drawing 1.- KFC. Individual HIDRONIC type installation



Drawing 2.- KFC. Multiple HIDRONIC type installation

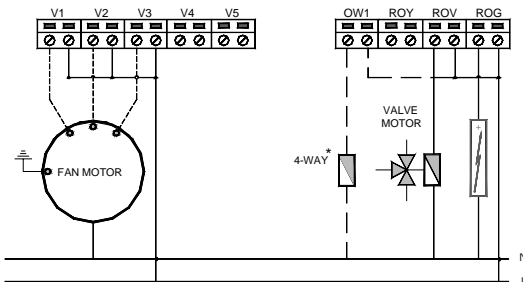


2 Pipes installations



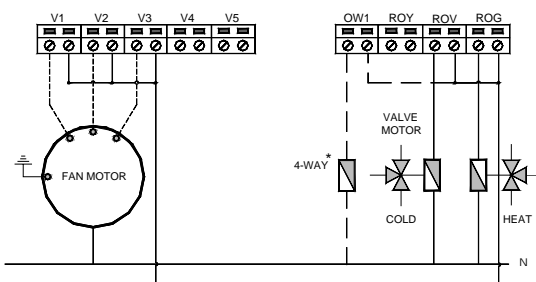
* Only wire the 4 way valve in individual installations.

2 pipes + electric heater



* Only wire the 4 way valve in individual installations.

4 pipes installations:



* Only wire the 4 way valve in individual installations.

Thermostats (emitters)

- Power 2 batteries 1,5 V LR06 AA (alkaline). Autonomy 1 year (or superior). The batteries are supplied with the system.
- Battery wear indicator.
- Wall fixing by means of screws (supplied)
- Protection level: IP 30
- Carrier frequency (ISM Band, acc. I-ETS 300-220 standard: 433.92 MHz) (Optional: 434.33 MHz)
- Average range: 20 m in the habitat.

Options (See the installer manual KFC)

The system can be configured by means of two *switches* (SW1 y SW2) to the control panel:

- Temporisation (10 s o 2 min 40 s) of the fan (to avoid sudden start in cold).
- Control of the 4 ways valve in individuals installations.
- Fix or variable fan (adjustment 3 speeds). In the first case, it is obligatory to install an overpressure damper.
- 2 o 3 ways valves.
- Water sensor PT-100. Mode indicator (Winter /Summer)

Accessories (See valid price list to select these elements)

- Motorized dampers (24 VCC) ZP-AZ, adaptable to MADEL grilles.
- Motorized dampers (24 VCC) ZC adaptable to circular ducts.
- Motorized dampers (24 VCC) ZQ adaptable to rectangular ducts.
- Motorized plenums (24 VCC) PL...-ZR, adaptable to MADEL grilles and diffusers.
- Overpressure dampers fitting ZS.

Sizes (mm):

