



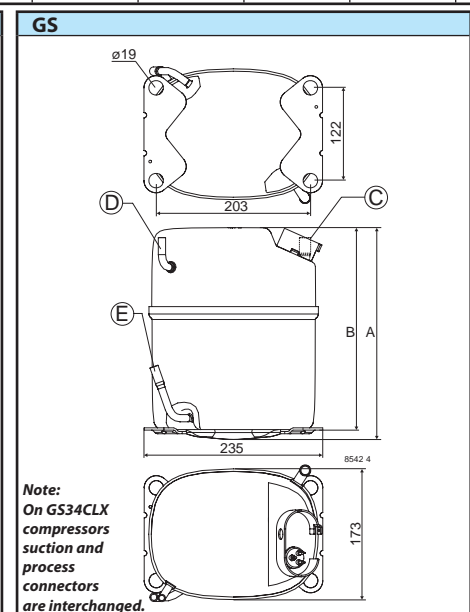
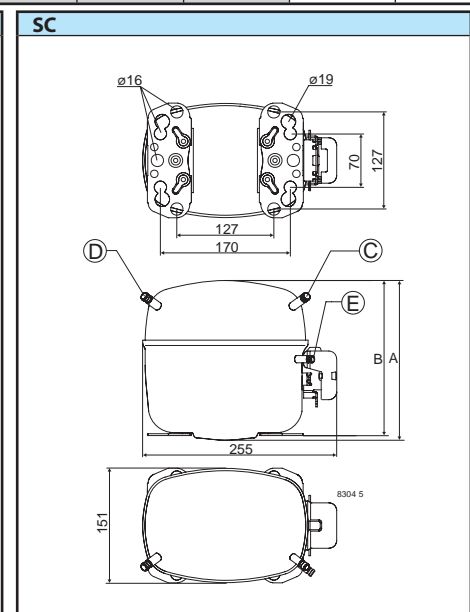
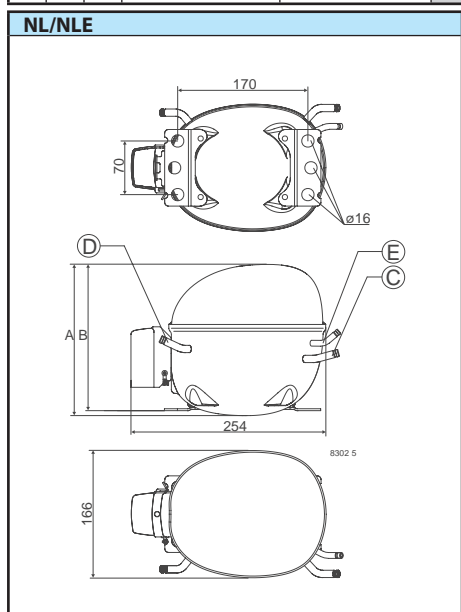
R404A/R507 • R134a • R290

Danfoss Compressors

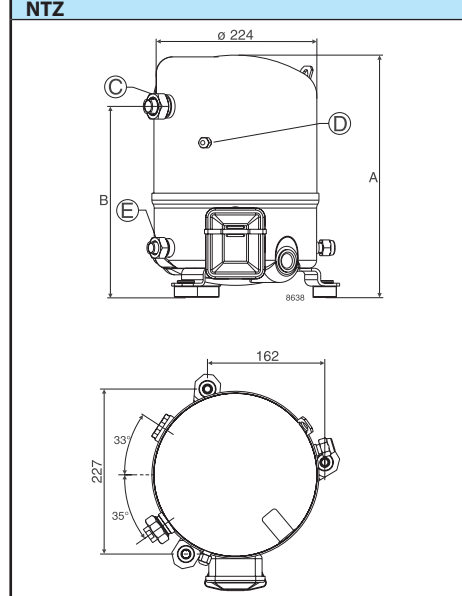
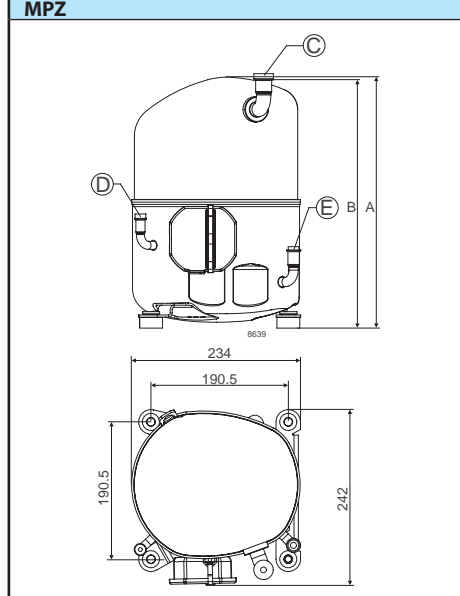
for light commercial applications

220-240 V • 50 Hz

Refrigerant	Application	Compressor incl. the GEEP™ range	Compressor code number	Cooling capacity [W]													
				Evaporating temperature													
				-45	-40	-35	-30	-25	-23.3	-20	-15	-10					
1 Phase	R134a	MBP	NL6.1MF ¹⁾	105G6660								141	189	245			
			NL7.3MF ¹⁾	105G6772									179	236	304		
			NL8.4MF ¹⁾	105G6879									213	277	353		
			NL10MF ¹⁾	105G6885									266	346	441		
			NL11MF ¹⁾	105G6151									292	380	485		
			NLE10MF	105G6888			88	137	194	216	262	343	440				
			SC10G ¹⁾	104G8000			23	60	113	135	183	268	369				
			SC12G ¹⁾	104G8240			65	113	175	199	252	348	464				
			SC15G ¹⁾	104G8520					164	206	290	424	568				
			SC18G ¹⁾	104G8820						283	318	394	526	684			
			SC21G	104G8140						333	370	453	606	792			
			SC21MFX	104G8120							430	514	662	840			
			GS26MFX GEEP™	107B0700								754	989	1266			
			GS34MFX GEEP™	107B0701								998	1296	1648			
			SC10GH ¹⁾	104G8041									233	352			
	SC12GH ¹⁾	104G8261										429					
	SC15GH ¹⁾	104G8561											559				
	SC18GH (50 Hz)	104G8860										539	676				
	SC18GH ¹⁾	104G8861									485	639					
	GS26GHX GEEP™	107B0702									937	1198					
	R404A	LBP	SC10CLX ¹⁾	104L2533			166	255	360	400	483	625	789				
			SC12CLX.2 ¹⁾	104L2697	130	205	294	399	522	569	666	834	1026				
			SC15CLX.2 ¹⁾	104L2896	159	250	358	486	637	694	813	1017	1251				
			SC18CLX.2 ¹⁾	104L2197	194	306	439	595	780	849	995	1245	1532				
			SCE18CLX.2 ¹⁾	104L2196	194	306	439	595	780	849	995	1245	1532				
			SC21CL	104L2322	226	325	455	617	813	887	1042	1306	1606				
			GS26CLX GEEP™	107B0500	325	497	703	949	1240	1348	1580	1974	2427				
			GS34CLX GEEP™	107B0501		729	1003	1330	1715	1857	2165	2687	3289				
			NTZ048	120F0089 ²⁾	261	527	964	1405	1931	2131	2550	3270	4100				
			NTZ068	120F0090 ²⁾	779	1130	1756	2332	3030	3297	3863	4849	6001				
		MBP	SC10MLX	104L2506							465	546	687	855			
			SC12MLX	104L2606							572	669	838	1038			
			SC15MLX	104L2869							710	829	1038	1285			
			SC18MLX	104L2139							831	968	1210	1497			
			SC18MLX.3	104L2146							876	1018	1266	1557			
			GS21MLX GEEP™	107B0502								1096	1394	1748			
			GS26MLX GEEP™	107B0503								1426	1810	2254			
			GS34MLX GEEP™	107B0504								1929	2408	2953			
			MPZ038 GEEP™	120F0153 ²⁾				851	1289	1426	1722	2257	2904				
			MPZ048 GEEP™	120F0154 ²⁾				1214	1823	2006	2398	3091	3914				
			MPZ054 GEEP™	120F0155 ²⁾				1250	1997	2224	2700	3518	4465				
			MPZ061 GEEP™	120F0156 ²⁾				1484	2368	2580	3106	4003	5030				
			MPZ068 GEEP™	120F0157 ²⁾				1889	2828	3098	3665	4636	5758				
			R290	LBP/MBP	SC10CNX	104H8065		126	179	245	325	355	420	531	660		
					SC12CNX	104H8265		178	250	331	426	462	540	678	846		
SC15CNX	104H8565				195	297	415	550	601	707	887	1093					
SC18CNX	104H8865				219	341	480	640	700	824	1033	1272					
SC12CNX.2	104H8266				186	258	346	453	493	578	725	895					
LBP	SC15CNX.2	104H8566			252	332	434	560	609	714	900	1120					
	SC18CNX.2	104H8866			244	384	531	689	747	863	1057	1273					
	SC21CNX.2	104H8166			339	492	654	828	891	1020	1233	1471					
	NTZ048 ¹⁾	120F0008 ²⁾		289	558	995	1424	1931	2122	2522	3204	3987					
	NTZ068 ¹⁾	120F0009 ²⁾		673	1075	1750	2380	3122	3402	3988	4992	6146					
3 Phase	R404A	MBP	MPZ038 ¹⁾ GEEP™	120F0057 ²⁾			879	1342	1484	1791	2339	2995					
			MPZ048 ¹⁾ GEEP™	120F0058 ²⁾			1173	1846	2047	2467	3183	4005					
			MPZ054 ¹⁾ GEEP™	120F0059 ²⁾			1250	1997	2200	2700	3518	4465					
			MPZ061 ¹⁾ GEEP™	120F0060 ²⁾			1484	2328	2580	3106	4003	5030					
			MPZ068 ¹⁾ GEEP™	120F0061 ²⁾			1777	2732	3011	3592	4579	5707					



Ambient temperature [°C]								Power consumption [W]				Displacement [cm ³]	Recommended compressor at ambient temperature				
-6.7	-5	0	5	7.2	10	15	20	Evaporating temperature [°C]					32 °C		38 °C		
								-35	-25	-10	5		LBP	MBP	HBP	LBP	MBP
288	312	390	482	527	588	709				187	243	6.13		F ₁	F ₁		F ₁
356	385	480	591	645	719	867				227	298	7.27		F ₁	F ₁		F ₁
412	445	553	679	741	825	994				261	349	8.35		F ₁	F ₁		F ₁
513	554	687	843	919	1023	1231				323	435	10.10		F ₁	F ₁		F ₁
565	509	756	927	1011	1125	1354				360	495	11.15		F ₂	F ₂		F ₂
513	554	688	845	922				134	198	308	426	10.10	F ₁	F ₁		F ₁	F ₁
445	486	618	764	833	925	1100		93	181	290	383	10.29	F ₁	F ₁	F ₂	F ₁	F ₁
553	603	768	960	1054	1182	1437		148	227	355	493	12.87	O/F ₁	F ₂	F ₂	O/F ₁	F ₂
672	728	908	1110	1207	1340	1600			233	440	595	15.28	O/F ₁	F ₂	F ₂	O/F ₁	F ₂
804	870	1087	1337	1459	1624	1950			331	507	695	17.69	O/F ₁	F ₂	F ₂	O/F ₁	F ₂
934	1012	1268	1560	1700	1889	2257			382	575	789	20.95	F ₂	F ₂	F ₂	F ₂	F ₂
976	1052	1303	1596	1740	1936					615	813	20.95		F ₂			F ₂
1476	1591	1970	2411	2626						696	942	26.30		F ₂			F ₂
1918	2063	2550	3115	3392						909	1234	33.80		F ₂			F ₂
425	478	613	762	832	927	1113	1323			281	395	10.29			F ₂		
505	577	752	957	1058	1196	1471	1787			356	487	12.87			F ₂		
669	723	915	1139	1249	1398	1698	2041			424	565	15.28			F ₂		
789	855	1077	1340	1469	1645	1990				498	697	17.69			F ₂		
758	825	1047	1310	1440	1618	1976	2389			452	605	17.69			F ₂		
1400	1510	1880	2316	2531	2826	3417	4098			737	970	26.30			F ₂		
910	977	1190	1430					258	352	508	631	10.29	F ₂	F ₂		F ₂	F ₂
								365	475	659		12.87	F ₂			F ₂	
1424	1519							433	565	783		15.28	F ₂			F ₂	
								517	680	949		17.68	F ₂			F ₂	
								459	621	888		17.68	F ₂			F ₂	
								534	702	989		20.95	F ₂			F ₂	
								669	888	1285		26.30	F ₂			F ₂	
								924	1196	1721		33.80	F ₂			F ₂	
									1342	1885		48.10	SG	SG		SG	SG
									2067	2936		67.90	SG	SG		SG	SG
981	1051	1278	1537							518	633	10.29		F ₂			F ₂
1188	1272	1542	1852	2001						620	762	12.87		F ₂			F ₂
1471	1574	1909	2293	2478						780	979	15.28		F ₂			F ₂
1712	1832	2220	2665	2880						860	1080	17.68		F ₂			F ₂
1779	1898	2292	2743	2964						878	1096	17.68		F ₂			F ₂
2018	2164	2650	3211	3483						965	1212	21.20		F ₂			F ₂
2586	2764	3351	4022	4345						1213	1532	26.30		F ₂			F ₂
3358	3575	4283	5088	5476						1725	2235	33.80		F ₂			F ₂
3399	3675	4580	5628	6138	6831				930	1374	1711	38.10		SG			SG
4535	4881	6004	7298	7924	8774				1326	1869	2352	48.10		SG			SG
5168	5555	6803	8222	8968	9826				1420	2154	2725	53.90		SG			SG
5786	6201	7528	9023	9738	10700				1676	2522	3159	60.50		SG			SG
6591	7051	8530	10215	11026	12123				2091	2965	3682	67.90		SG			SG
	809	979	1172					208	274	362	422	10.29	F ₂	F ₂		F ₂	F ₂
	1050	1293	1582					269	344	456	576	12.87	F ₂	F ₂		F ₂	F ₂
	1328	1594	1894					315	420	560	715	15.28	F ₂	F ₂		F ₂	F ₂
	1543	1849	2193					370	500	707	952	17.68	F ₂	F ₂		F ₂	F ₂
								298	379	502		12.87	F ₂			F ₂	
								351	445	610		15.28	F ₂			F ₂	
								417	541	682		17.68	F ₂			F ₂	
								491	623	855		20.95	F ₂			F ₂	
									1328	1884		48.10	SG	SG		SG	SG
									2017	2843		67.90	SG	SG		SG	SG
3492	3770	4673	5715	6220	6906				966	1419	1739	38.10		SG			SG
4611	4943	6009	7212	7788	8563				1288	1896	2361	48.10		SG			SG
5168	5555	6803	8222	8904	9826				1420	2154	2725	53.90		SG			SG
5786	6201	7528	9023	9738	10700				1676	2522	3159	60.50		SG			SG
6537	6992	8449	10093	10880	11940				1942	2905	3706	67.90		SG			SG



MPZ compressors sight glass version

Note:
Drawing and above table represent standard MPZ version. Sight glass version also available with below code numbers.

	Compressor with sight glass	Industrial pack code number	Single pack code number
1 Phase	MPZ038 ¹⁾ GEEP™	120F0158	120F0148
	MPZ048 ¹⁾ GEEP™	120F0159	120F0149
	MPZ054 ¹⁾ GEEP™	120F0160	120F0150
	MPZ061 ¹⁾ GEEP™	120F0161	120F0151
3 Phase	MPZ068 ¹⁾ GEEP™	120F0162	120F0152
	MPZ038 ¹⁾ GEEP™	120F0062	120F0052
	MPZ048 ¹⁾ GEEP™	120F0063	120F0053
	MPZ054 ¹⁾ GEEP™	120F0064	120F0054
	MPZ061 ¹⁾ GEEP™	120F0065	120F0055
	MPZ068 ¹⁾ GEEP™	120F0066	120F0056

Hermetic compressor

- Applications**
LBP: Low Back
MBP: Medium Back
HBP: High Back
- Motor types**
RSCR: Resistant
CSIR: Capacitor
CSR: Capacitor
- Starting devices**
HST: High Start
- Supply frequency**
¹⁾ = capable of
Most R134a 220V compressors can run with
- Package**
²⁾ = industrial package
- Electrical equipment**
* = Gasket/cover

Recommended compressor cooling at ambient temperatures									Electrical equipment (HST), spade dimensions					Single pack code number	Dimensions				
32 °C			38 °C			43 °C			Starting relay	Starting capacitor	Starting device	Cord relief	Cover		Height [mm]		Connectors location/I.D. [mm]		
LBP	MBP	HBP	LBP	MBP	HBP	LBP	MBP	HBP							6.3 mm	6.3 mm	6.3 mm	A	B
	F ₁	F ₁		F ₁	F ₁		F ₁	F ₁	117U6015	117U5015		103N1010	103N2011	195B0411	190	184	8.2	6.2	6.2
	F ₁	F ₁		F ₁	F ₁		F ₁	F ₁	117U6016	117U5015		103N1010	103N2011	195B0370	197	191	8.2	6.2	6.2
	F ₁	F ₁		F ₁	F ₁		F ₁	F ₁	117U6016	117U5015		103N1010	103N2011	195B0371	197	191	8.2	6.2	6.2
	F ₁	F ₁		F ₁	F ₁		F ₁	F ₁	117U6022	117U5018		103N1010	103N2011	195B0275	203	197	8.2	6.2	6.2
	F ₂	F ₂		F ₂	F ₂		F ₂	F ₂	117U6022	117U5018		103N1010	103N2011	195B0432	203	197	8.2	6.2	6.2
F ₁	F ₁		F ₁	F ₁		F ₁	F ₁		117U6003	117U5015		103N1010	103N2011	on request	203	197	8.2	6.2	6.2
F ₁	F ₁	F ₂	F ₁	F ₁	F ₂	F ₁	F ₁	F ₂	117U6002	117U5017		103N1004	103N2009	195B0043	199	193	8.2	6.2	6.2
O/F ₁	F ₂	F ₂	O/F ₁	F ₂	F ₂	O/F ₁	F ₂	F ₂	117U6003	117U5017		103N1004	103N2009	195B0050	209	203	8.2	6.2	6.2
O/F ₁	F ₂	F ₂	O/F ₁	F ₂	F ₂	O/F ₁	F ₂	F ₂	117U6005	117U5017		103N1004	103N2009	195B0053	209	203	10.2	6.2	6.2
O/F ₁	F ₂	F ₂	O/F ₁	F ₂	F ₂	O/F ₁	F ₂	F ₂	117U6019	117U5017		103N1004	103N2009	195B0059	219	213	10.2	6.2	6.2
F ₂	F ₂	F ₂	F ₂	F ₂	F ₂	F ₂	F ₂	F ₂			117-7028	103N1004	103N2009	195B0048	219	213	10.2	6.2	6.2
	F ₂			F ₂			F ₂		117U6019	117U5017		103N1004	103N2009	on request	219	213	10.2	6.2	6.2
	F ₂			F ₂			F ₂				117-7055	107B9100/9101/9104*	103N2009	195B0433	259	247	12.9	6.5	8.2
	F ₂			F ₂			F ₂				117-7056	107B9100/9101/9104*	103N2009	195B0435	259	247	12.9	6.5	8.2
		F ₂			F ₂			F ₂	117U6005	117U5017		103N1004	103N2009	195B0142	199	193	10.2	6.2	8.2
		F ₂			F ₂			F ₂	117U6011	117U5017		103N1004	103N2009	195B0249	209	203	10.2	6.2	8.2
		F ₂			F ₂			F ₂	117U6011	117U5017		103N1004	103N2009	195B0144	209	203	10.2	6.2	8.2
		F ₂			F ₂			F ₂	117U6019	117U5017		103N1004	103N2009	195B0246	219	213	10.2	6.2	8.2
		F ₂			F ₂			F ₂			117-7038	103N1004	103N2008	195B0266	219	213	10.2	6.2	8.2
		F ₂			F ₂			F ₂			117-7070	107B9100/9101/9104*	103N2009	195B0434	259	247	12.9	6.5	8.2
F ₂	F ₂		F ₂	F ₂					117U6005	117U5017		103N1004	103N2008	195B0151	209	203	8.2	6.2	6.2
F ₂			F ₂						117U6019	117U5017		103N1004	103N2008	195B0379	219	213	8.2	6.2	6.2
F ₂			F ₂			F ₂			117U6019	117U5017		103N1004	103N2009	195B0399	219	213	10.2	6.2	6.2
F ₂			F ₂			F ₂			117U6013	117U5012		103N1004	103N2009	195B0332	219	213	10.2	6.2	6.2
F ₂			F ₂			F ₂					117-7012	103N1004	103N2009	on request	219	213	10.2	6.2	6.2
F ₂			F ₂			F ₂					117-7012	103N1004	103N2009	195B0070	219	213	10.2	6.2	6.2
F ₂			F ₂			F ₂					117-7056	107B9100/9101/9104*	103N2009	195B0427	259	247	12.9	6.5	8.2
F ₂			F ₂			F ₂					117-7074	107B9100/9101/9104*	103N2009	195B0439	279	267	12.9	6.5	8.2
SG	SG		SG	SG		SG	SG				7701028		8156134	120F0087	333	263	15.9 (5/8")	Flare	12.7 (1/2")
SG	SG		SG	SG		SG	SG				7701028		8156134	120F0088	333	263	15.9 (5/8")	Flare	12.7 (1/2")
	F ₂			F ₂			F ₂		117U6011	117U5017		103N1004	103N2009	195B0345	209	203	8.2	6.5	6.5
	F ₂			F ₂			F ₂		117U6011	117U5017		103N1004	103N2009	195B0323	219	213	8.2	6.5	6.5
	F ₂			F ₂			F ₂		117U6013	117U5012		103N1004	103N2009	195B0391	219	213	10.2	6.2	6.2
	F ₂			F ₂			F ₂				117-7012	103N1004	103N2009	195B0392	219	213	10.2	6.2	6.2
	F ₂			F ₂			F ₂				117-7012	103N1004	103N2009	195B0412	219	213	10.2	6.2	6.2
	F ₂			F ₂			F ₂				117-7070	107B9100/9101/9104*	103N2009	195B0436	259	247	12.9	6.5	8.2
	F ₂			F ₂			F ₂				117-7072	107B9100/9101/9104*	103N2009	195B0437	279	267	16.1	6.5	9.7
	F ₂			F ₂			F ₂				117-7056	107B9100/9101/9104*	103N2009	195B0438	279	267	16.1	6.5	9.7
	SG			SG			SG				120Z0029		120Z0032	120F0143	356	342	19.1 (3/4")	9.5 (3/8")	12.7 (1/2")
	SG			SG			SG				120Z0029		120Z0032	120F0144	356	342	19.1 (3/4")	9.5 (3/8")	12.7 (1/2")
	SG			SG			SG				120Z0029		120Z0032	120F0145	356	342	19.1 (3/4")	9.5 (3/8")	12.7 (1/2")
	SG			SG			SG				7701149		120Z0032	120F0146	356	342	19.1 (3/4")	9.5 (3/8")	12.7 (1/2")
	SG			SG			SG				7701149		120Z0032	120F0147	356	342	19.1 (3/4")	9.5 (3/8")	12.7 (1/2")
F ₂	F ₂		F ₂	F ₂		F ₂	F ₂		117-7049	103N1004	103N2009	on request	209	203	8.2	6.2	6.2	6.2	
F ₂	F ₂		F ₂	F ₂		F ₂	F ₂		117-7049	103N1004	103N2009	195B0333	209	203	8.2	6.2	6.2	6.2	
F ₂	F ₂		F ₂	F ₂		F ₂	F ₂		117-7051	103N1004	103N2009	195B0203	209	203	8.2	6.2	6.2	6.2	
F ₂	F ₂		F ₂	F ₂		F ₂	F ₂		117-7034	103N1004	103N2009	195B0414	219	213	10.2	6.2	6.2	6.2	
F ₂			F ₂			F ₂			117U7003	117U5017		103N1004	103N2009	on request	209	203	8.2	6.2	6.2
F ₂			F ₂			F ₂			117U7005	117U5017		103N1004	103N2009	on request	209	203	8.2	6.2	6.2
F ₂			F ₂			F ₂			117U7011	117U5017		103N1004	103N2009	on request	219	213	10.2	6.2	6.2
F ₂			F ₂			F ₂			117U7013	117U5012		103N1004	103N2009	on request	219	213	10.2	6.2	6.2
SG	SG		SG	SG		SG	SG						8156134	120F0001	333	263	15.9 (5/8")	Flare	12.7 (1/2")
SG	SG		SG	SG		SG	SG						8156134	120F0002	333	263	15.9 (5/8")	Flare	12.7 (1/2")
	SG			SG			SG						120Z0032	120F0047	348	346	19.1 (3/4")	9.5 (3/8")	12.7 (1/2")
	SG			SG			SG						120Z0032	120F0048	348	346	19.1 (3/4")	9.5 (3/8")	12.7 (1/2")
	SG			SG			SG						120Z0032	120F0049	348	346	19.1 (3/4")	9.5 (3/8")	12.7 (1/2")
	SG			SG			SG						120Z0032	120F0050	348	346	19.1 (3/4")	9.5 (3/8")	12.7 (1/2")
	SG			SG			SG						120Z0032	120F0051	348	346	19.1 (3/4")	9.5 (3/8")	12.7 (1/2")

Standard version Hermetic compressors type NL, NLE, SC, GS, MPZ, NTZ • R404A/R507 • R134a • R290

Applications
LBP: Low Back Pressure
MBP: Medium Back Pressure
HBP: High Back Pressure

Motor types
RSCR: Resistant Start Capacitor Run
CSIR: Capacitor Start Induction Run
CSR: Capacitor Start Run

Starting devices
HST: High Starting Torque

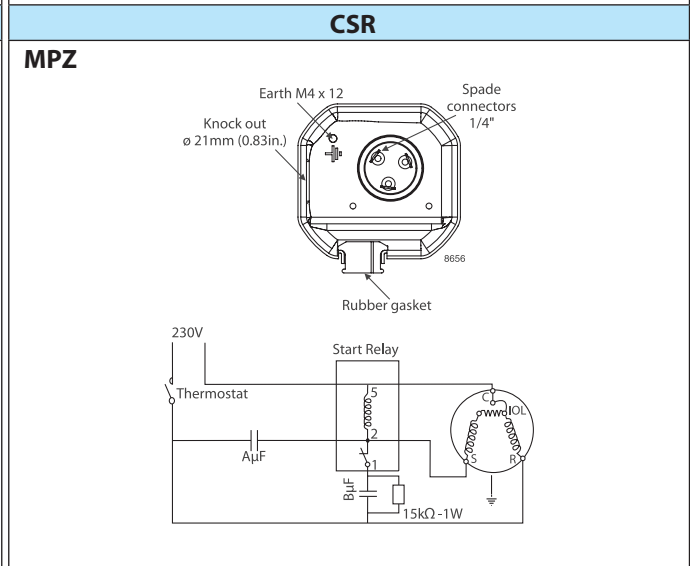
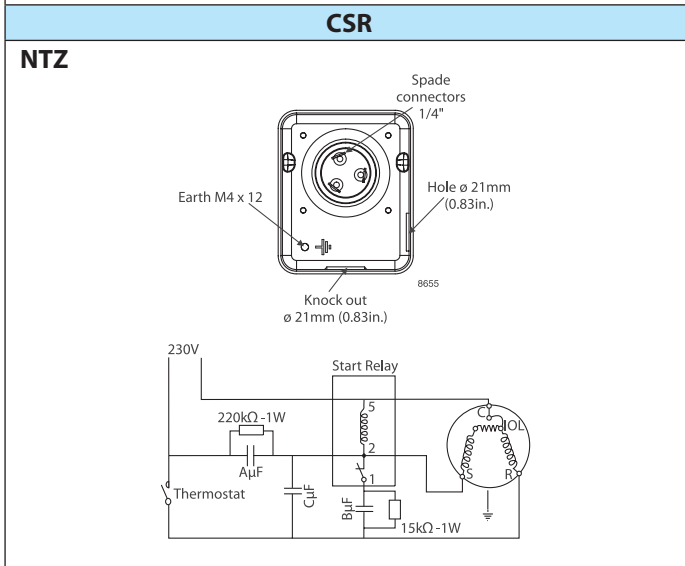
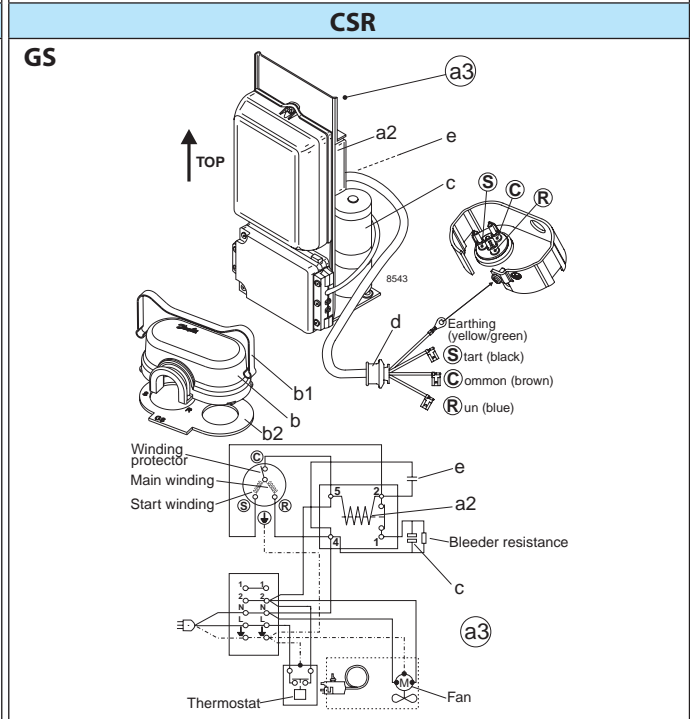
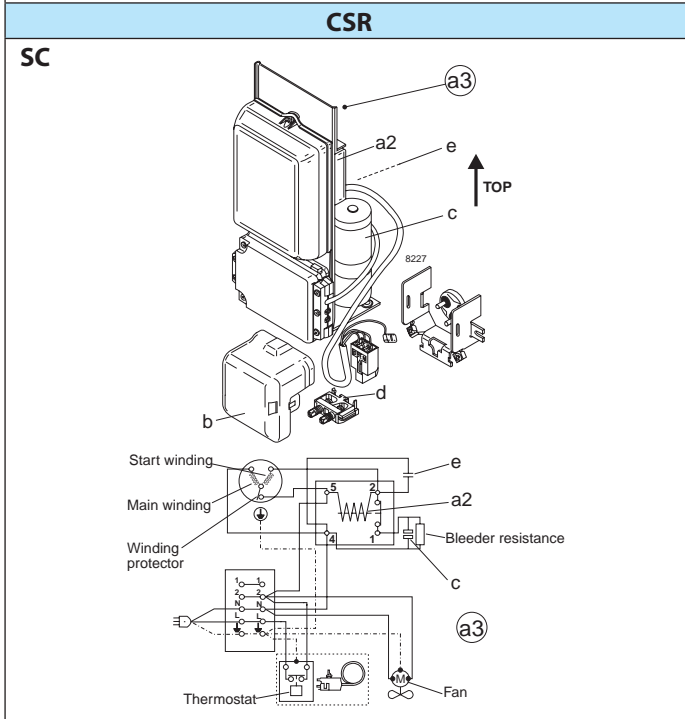
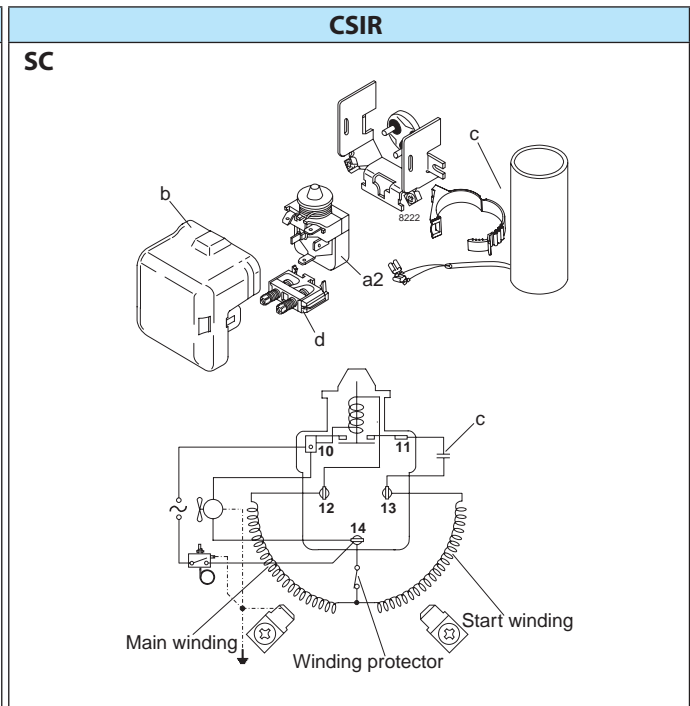
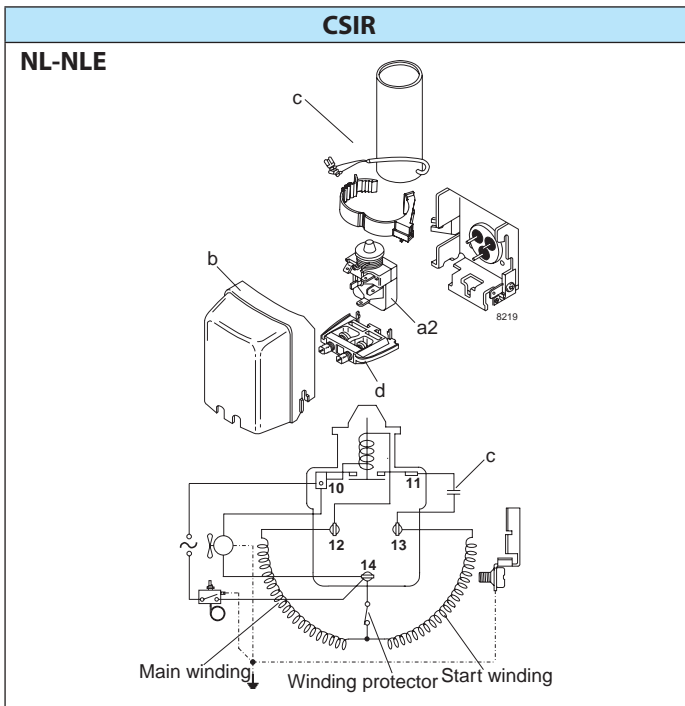
Supply frequency
¹⁾ = capable of 60Hz
 Most R134a 220 V / 50 Hz SC-G (universal type compressors) can run with 60 Hz at 220 V under LBP conditions.

Package
²⁾ = industrial pack (MPZ / NTZ)

Electrical equipment GS compressors
 * = Gasket/cover/clamp parts of compressor

NL / NLE / SC:
Test conditions EN 12900 (CECOMAF)
 Condensing temperature 55°C (R134a)
 Condensing temperature 45°C (R404A/R507, R290)
 Ambient temperature 32°C
 Suction gas temperature 32°C
 No subcooling
 220 V / 50 Hz

GS / NTZ / MPZ:
Test conditions EN 12900
 Condensing temp. LBP 40°C
 Condensing temp. MBP 45°C
 Condensing temp. HBP 50°C
 Ambient temperature 32°C
 Suction gas temperature 20°C
 NTZ at Te = -45°C, -40°C
 MPZ at Te = -30°C
 Liquid temperature no subcooling
 220 V / 50 Hz



Legend

- a2: Starting relay
- a3: Starting device
- b: Cover
- b1/b2: Clamp/Gasket (parts of compressor)
- c: Starting capacitor
- d: Cord relief
- e: Run capacitor



Applications

This new compressor range will perfectly fit various applications like:



- Laboratory and medical equipment
- Clip-on and condensing units
- Compressed air dryers
- Glass door merchandisers
- Bakery refrigeration equipment
- Low temperature display cabinets
- Vending machines
- Ice making machines
- Slush and frozen beverage makers
- Bottle coolers



Refrigeration Controls programme consists of:

<p>Thermostatic expansion valves</p>	<p>Hermetic filter drier with solid core</p>	<p>Direct or servo operated solenoid valve</p>	<p>Sight glass with moisture indicator</p>