

# AK2 Service Tool

## Language Instructions

Document Language Instructions			
Author Tommy Frichot	Version 1.02	Status final	Last update 2002-03-13
Approved by			Date 2002-03-12

## Document History

Rev.	Date	Author	Brief description of change
1.00	2003-03-12	TFR	Initial version.
1.01	2003-03-13	TFR	Updated. Description of source code changes added
1.02	2004-03-23	ABC	Removed source-code issues.

## Authors

Name	Initials	Organisation
Tommy Frichot	TFR	Resource SE
Anker BoChristensen	ABC	Danfoss A/S

# Table of Contents

<b>1</b>	<b>Introduction</b>	<b>4</b>
1.1	Purpose and Background	4
1.2	Scope	4
1.3	References	4
<b>2</b>	<b>Chinese on a western language windows 2000</b>	<b>5</b>
2.1	Prerequisites	5
2.2	Install supplemental Language support	5
2.3	Configure the Java Virtual Machine	7
<b>3</b>	<b>Chinese on a western language windows XP</b>	<b>8</b>
3.1	Prerequisites	8
3.2	Install supplemental Language support	8
3.3	Configure the Java Virtual Machine	9
<b>4</b>	<b>Chinese on a chinese windows</b>	<b>10</b>
4.1	Prerequisites	10
4.2	Install supplemental Language support	10
4.3	Configure the Java Virtual Machine	10
<b>5</b>	<b>Known issues</b>	<b>11</b>
5.1	Problems with the AWT Framework	11

# 1 INTRODUCTION

## 1.1 Purpose and Background

This document describes the necessary steps for running the Service Tool application in a East Asian version on a Windows 2000 platform running a western language. In this document, the Simplified Chinese language is used as an example, but it should apply to all East Asian and Far Eastern languages.

## 1.2 Scope

The document is valid for version 1 of the AK2 Service Tool application.

## 1.3 References

Number	Name	Description
1	V2K-Kravspecifikation-002-SW Requirement Specification ServiceTool.doc	Requirements Specification
2	<a href="http://ktmatu.com/info/view-and-browse-chinese-web-pages/chinese-font-review.html">http://ktmatu.com/info/view-and-browse-chinese-web-pages/chinese-font-review.html</a>	Descriptions on Chinese Fonts
3	<a href="http://java.sun.com/j2se/1.4/docs/guide/intl/encoding.doc.html">http://java.sun.com/j2se/1.4/docs/guide/intl/encoding.doc.html</a>	Character encodings for different Locales
4	<a href="http://java.sun.com/j2se/1.4/docs/guide/intl/fontprop.html">http://java.sun.com/j2se/1.4/docs/guide/intl/fontprop.html</a>	Guide to the font.properties file
5	<a href="http://forum.java.sun.com/thread.jsp?forum=16&amp;thread=25489">http://forum.java.sun.com/thread.jsp?forum=16&amp;thread=25489</a>	Descriptions on language specific problems in the AWT Framework
6	<a href="http://ktmatu.com/info/view-and-browse-chinese-web-pages/chinese-font-review.html">http://ktmatu.com/info/view-and-browse-chinese-web-pages/chinese-font-review.html</a>	For further information on Chinese fonts, please see the following link.

## 2 CHINESE ON A WESTERN LANGUAGE WINDOWS 2000

### 2.1 Prerequisites

The following material must be available before the configuration can be done:

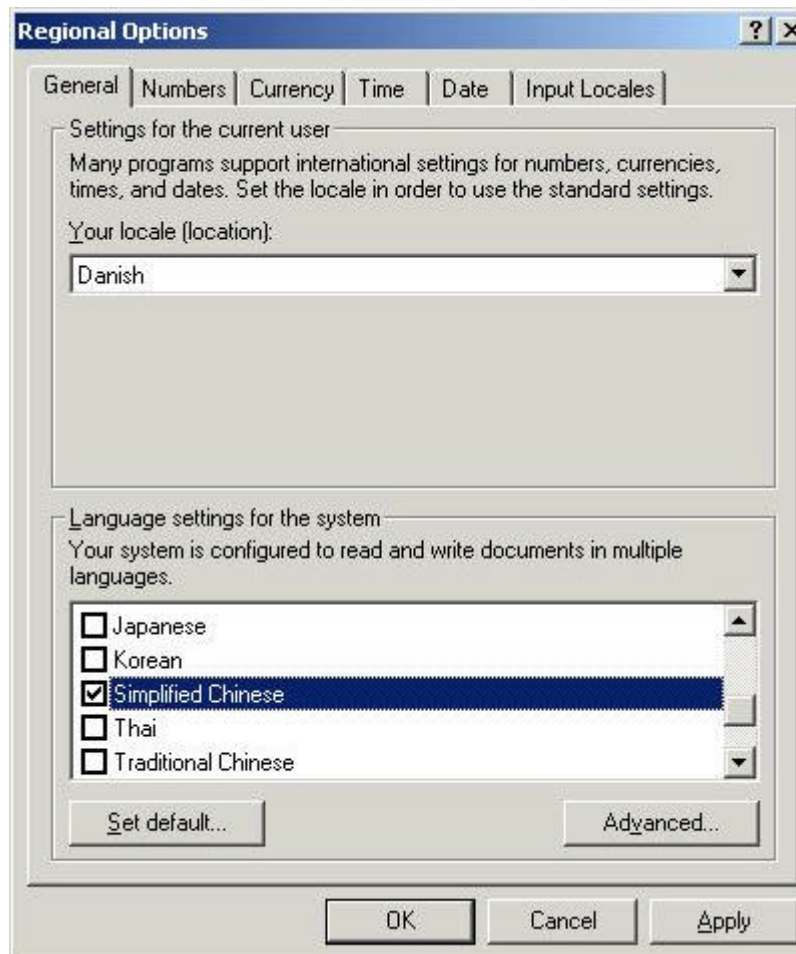
- Windows 2000 CD
- PC running Windows 2000 in a western language and the Vision 2000 Service Tool application

### 2.2 Install supplemental Language support

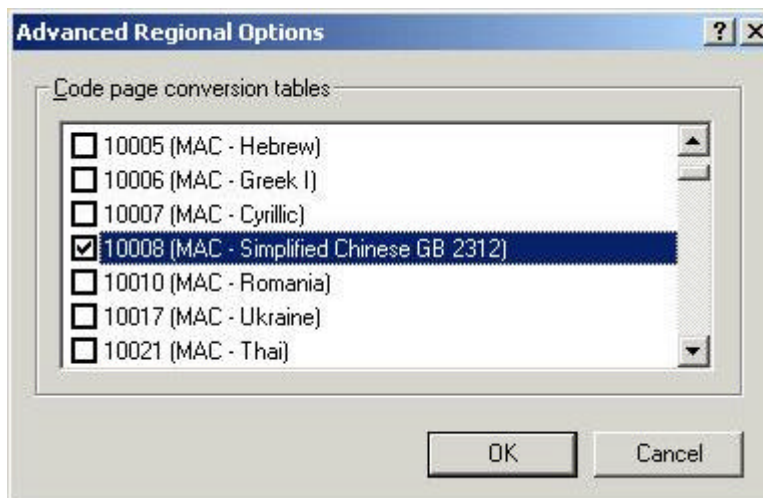
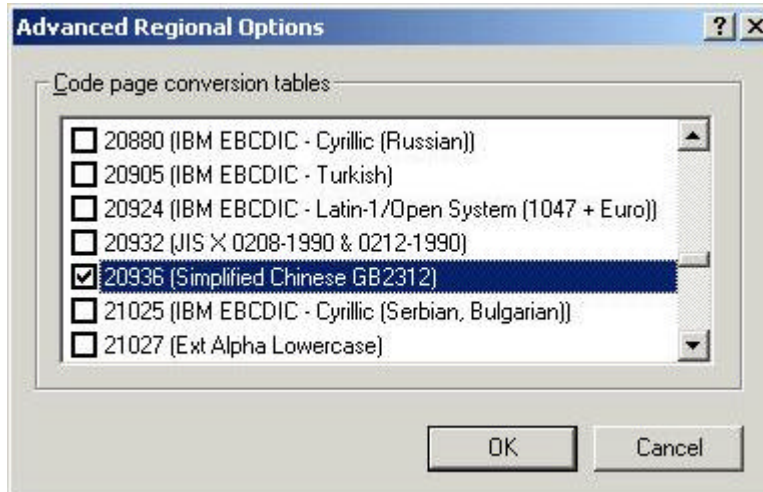
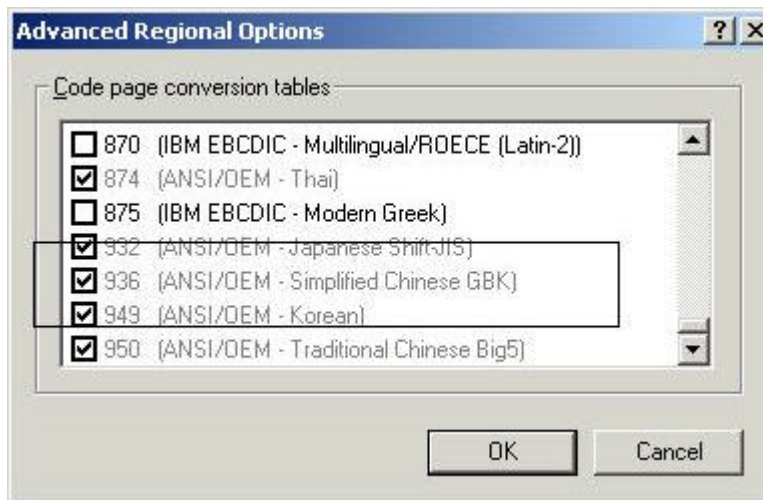
For a western language Windows 2000 operating system to be able to show East Asian fonts it is necessary to install supplemental language support for the needed languages.

The language support can be found on the windows 2000 CD and should be installed from the control panel.

1. Open the Control Panel.
2. Open the 'Regional Options' dialog.
3. Select the 'General' tab



4. In the listbox containing all installed languages on the system, find 'Simplified Chinese' and enable it.
5. Press the Advanced button and enable all code pages for Simplified Chinese.



6. Press OK twice
7. Windows will now ask for the installation CD. Follow the instructions on the screen. It might be necessary to reboot the machine.

## 2.3 Configure the Java Virtual Machine

The Java Virtual Machine uses a file to manage which font is used. The name of this file is font.properties and the file is found under <JAVA-INSTALLFOLDER>\jre\lib.

In this folder several files with filename begins with font.properties are found. One for each supported character encoding. Additional files are probably available from Sun's website.

On the following site is a list of character encodings that must be used for the different languages.

<http://java.sun.com/j2se/1.4/docs/guide/intl/encoding.doc.html>

From this list is found that Simplified Chinese, PRC Standard is contained in the encoding GB 18030.

Canonical Name	Description
GB18030	Simplified Chinese, PRC standard

In the java lib folder you find a file called font.properties.gb18030. Rename this file to font.properties. From now on, the JVM will use this file during execution.

When starting the Service Tool application, this character encoding will be used and Chinese characters will be shown.

Steps :

1. From the Java website shown above, Find the encoding which corresponds to the language you wish to run.
2. Find the corresponding font.properties.<ENCODING> in the \jre\lib folder.
3. Rename this file to font.properties.

A custom font.properties file can be made in case different mixed East Asian and Far East languages are needed. See this link for further information on this topic :

<http://java.sun.com/j2se/1.4/docs/guide/intl/fontprop.html>

## 3 CHINESE ON A WESTERN LANGUAGE WINDOWS XP

### 3.1 Prerequisites

The following material must be available before the configuration can be done:

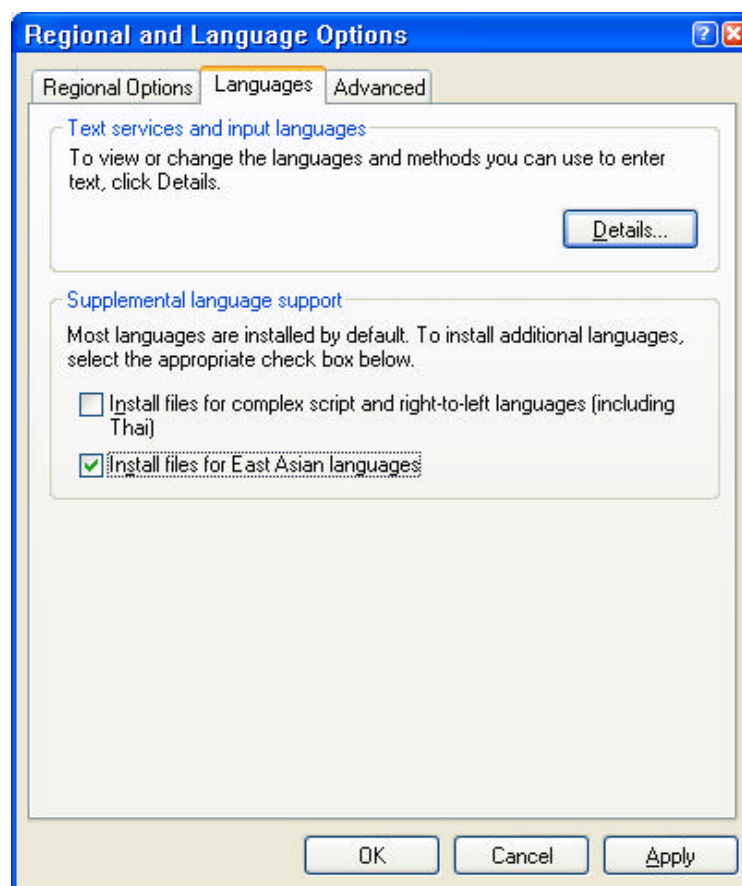
- Windows XP CD
- PC running Windows XP in a western language and the Vision 2000 Service Tool application

### 3.2 Install supplemental Language support

For a western language Windows XP operating system to be able to show East Asian fonts it is necessary to install supplemental language support for the needed languages.

The language support can be found on the windows XP CD and should be installed from the control panel.

1. Open the Control Panel.
2. Open the 'Regional and language Options' dialog.
3. Select the 'Languages' tab



4. Enable the checkbox saying "Install files for East Asian languages". This installs all fonts, code pages etc. for all East Asian languages..
5. Press OK and follow the on-screen instructions.



### **3.3      Configure the Java Virtual Machine**

There is no difference from windows 2000. See 2.3

## **4 CHINESE ON A CHINESE WINDOWS**

### **4.1 Prerequisites**

The following material must be available before the build can be started:

- PC running Windows XP/2000 in a Simplified Chinese language and the Vision 2000 Service Tool application

### **4.2 Install supplemental Language support**

On a Chinese windows machine (XP or 2000) these files are already installed.

### **4.3 Configure the Java Virtual Machine**

There is no difference from windows 2000/XP. See 2.3

This might not be necessary, depending on how the installation of the Java Machine is performed.

## **5 KNOWN ISSUES**

### **5.1 Problems with the AWT Framework**

The AWT TextField and TextArea components are incapable of displaying other fonts than those native in the Operating System. This means that, if you are running an English version of Windows 2000, you will not be able to show Chinese characters in these controls.

The following links to a Forum on Suns website where this issue is discussed in details.

<http://forum.java.sun.com/thread.jsp?forum=16&thread=25489>

All other controls, like Labels, Buttons, Combo boxes etc. are capable of showing Chinese characters and should not give any problems.